



EMIL ANDERSON

CONSTRUCTION





Everything we do is guided by a commitment to worker safety, leadership, improvement, and excellence.

Message from the President & CEO

EAC has always believed in creating value for clients and our reputation is built on a foundation of hard work, integrity and more than 80 years of success. We have completed countless civil infrastructure and paving projects throughout British Columbia relying on the skills and teamwork of our management, employees and partners. Today, the EAC culture encourages ideas, solutions and creates accountability. Our experienced and capable team all share a passion for innovation, improvement and results.

Robert Hasell, P.Eng.
President & CEO



About Us

Emil Anderson Construction (EAC) is a multi-disciplined contractor with diverse capabilities including road building, aggregate production, underground utilities, asphalt paving, bridge building, traffic management, and land development. EAC offers all these services using in-house personnel, which allows for a streamlined approach to project management, resulting in cost effective and efficient projects. Having the ability to self-perform most aspects of road and bridge projects is one of the key strengths of EAC.

As an innovative leader in the construction industry, EAC does things right the first time. We don't cut corners. We operate with integrity. We accomplish projects with excellence, never settling for mediocrity.

OUR PURPOSE

A leader in the civil infrastructure and paving industries, EAC undertakes challenging projects and completes them to a high standard. This motivation to succeed with integrity began with Mr. Emil Anderson over 80 years ago, and his hard-working nature, focus, and creativity are alive in the company to this day.

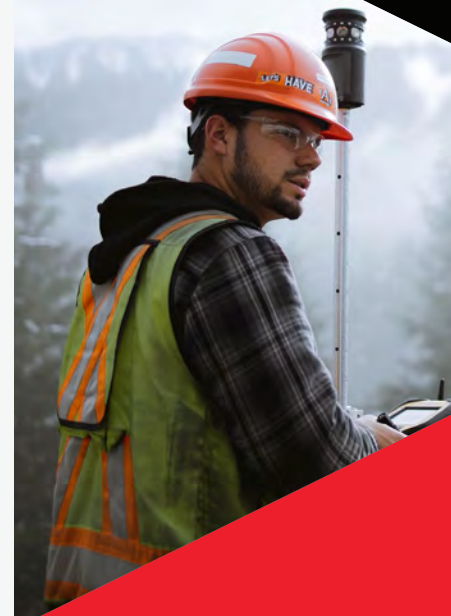
WHAT SETS US APART

EAC has a merited reputation as a safe, transparent, and trusted partner. We endeavor to always communicate openly and honestly with our clients. Our project focus is always on safety, product quality, and delivering projects on time and on budget. We strive to be a leader in safety throughout the industry and have zero tolerance for unsafe conditions, equipment, and acts.



The EAC Commitment

The Emil Anderson Group Core Values guide everything from our long-term strategies to our day-to-day operation. EAC regularly assesses our team's adherence to our Core Values, and if at any point a team member fails to adhere to our Core Values, we will develop and implement an action plan to address the deficiency.



Our core values provide us with a framework for leadership and decisions that are made daily.

► SAFETY

We ensure a safe and healthy work environment with a zero-injury culture.

► LEADERSHIP

We are people focused, share ideas and act with integrity, humility and respect.

► IMPROVEMENT

We innovate, measure performance and learn from our mistakes.

► COMMITMENT

We work hard, make good decisions and create accountability for results.

► EXCELLENCE

We deliver superior products and do it right the first time, every time.



Grading

EAC brings unmatched Provincial award-winning expertise and unparalleled local knowledge to tackle and solve construction challenges.

EAC has successfully completed numerous difficult rock excavations and grading projects. We employ a highly motivated management, supervisory, and support team, who focus on solutions and enhance our reputation for innovation and stakeholder collaboration. The EAC team has the experience and ability to successfully complete all manner of roadbuilding and heavy civil construction projects. Our experience is extensive in all areas of the province in both urban and remote locations.

HIGHWAY 1 – KAMLOOPS TO ALBERTA

EAC was presented with the Deputy Minister of Transportation & Infrastructure's Grading Excellence Award for the Hoffman's Bluff 4-Laning Project, which involved grading and paving 3.7 km of new 4-lane highway near Chase, BC. The work included grubbing, organic stripping, 378,000 m³ of common excavation and 400,000 m³ of rock excavation, drainage installations, aggregate production, grading, asphalt paving, and several large earth retaining walls. At the onset of the project, EAC redesigned retaining walls and rock excavation slopes to reduce the construction time schedule and overall project costs. The work was successfully completed directly adjacent to the Trans-Canada Highway and the main line Canadian Pacific Railway track. The project was completed in cooperation with the Neskonlith Indian Band.



Drill & Blast

Emil Anderson Construction has over the past several decades been considered one of BC's leading drilling, blasting, rock scaling and stabilization contractors.



EAC employs skilled and qualified drillers and blasters that are certified by WorkSafeBC for all types of blasting requirements. We have safely conducted drilling and blasting in some of the most challenging areas of BC including major highways, active mainline railways, active hydro plants and dams, near sensitive rivers and lakes as well as close proximity to residential buildings. We own a diverse fleet of drilling equipment for general highway construction, from track hydraulic drills to excavator mounted drills for difficult pioneering work. In addition to our in-house drillers and blasters, EAC also employs in-house high scalars and rock bolting and meshing crews.

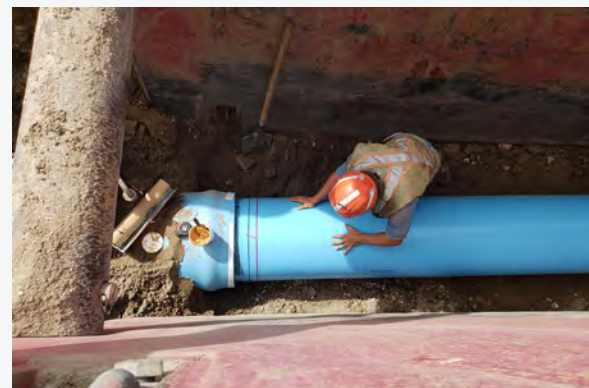
0102



Municipal Infrastructure

EAC has installed thousands of kilometres of underground piping, including water transmission and distribution mains, and we maintain a compliment of experienced pipe crews capable of safely and efficiently completing the most complex of pipe installations.

In any given year, EAC typically has four or five projects which include significant underground utility infrastructure, including underground water transmission and distribution mains. These projects include work for municipal clients and EAC's internal land development clients. The scope of these projects includes developing roads and utility infrastructure, including water systems, for over 2,500 properties in Kelowna during the past thirty years.



Site Development

EAC is a trusted and experienced site developer with the capabilities to self-perform all civil work, asphalt paving, aggregate production, traffic control, and surveying.

Since 1987, EAC as Owner/Developer/Contractor has built all the infrastructure to service close to 2,500 homes, including sanitary force main and sanitary gravity main. EAC works include site preparation, excavation/embankment, site servicing, shallow utilities, flatworks, grading, paving, and landscaping. For new home builds, EAC provides all activities associated with the development of roadways, site servicing and paving while the home builder constructs single family and multifamily homes.

03 04



Central Okanagan Paving & Aggregate Sales

Emil Anderson Construction provides its clients with paving and construction services of exceptional quality.

Emil Anderson Construction has two paving divisions. With a stationary asphalt plant in West Kelowna, EAC provides both asphalt paving services and aggregate sales to the Okanagan area. Local paving work includes milling and paving of local arterial and collector roads, parking lots, and miscellaneous utility repair locations.



05



Highway Paving

For larger paving projects throughout the Western Provinces, EAC's mobile asphalt team can be deployed to successfully complete paving projects wherever needed.



06

EAC can supply all materials, labour, and equipment needed for paving. By internally controlling all aspects of paving, EAC has a tighter control on quality and a better overall product for our customers.

Recognized by the industry for the implementation of programs to manage safety, quality, and corporate social responsibility, EAC has received numerous awards, including the Deputy Minister of Transportation & Infrastructure's Contractor of the Year Award. EAC uses innovative and efficient asphalt paving equipment, operated by some of the most experienced asphalt paving crews in BC.



Airport Infrastructure

We'll take your aviation project to new heights. Our expertise includes scalable land and airside solutions from minor runway pavement maintenance to major airport upgrades for some of the busiest airports in British Columbia.

Tight timeframes. Specialized design. Demanding safety requirements. Repaving and reconstructing airport runways is one of the most challenging types of construction. Emil Anderson Construction is one of the few contractors in British Columbia with the expertise and experience to handle these technically-sophisticated jobs. Our expert crews, a fleet of advanced equipment, and precise asphalt paving technology enable us to meet unique complexities, specifications, and qualifications required by Canadian regulatory requirements.



VEDDER BRIDGE DESIGN BUILD PROJECT

The existing Vedder Bridge was replaced with a new structural steel tied arch structure, providing increased flood clearance, increased lane widths, and new multi-use pathways. A key element of EAC's strategy for the project was to assemble the bridge on land and launch the bridge into place, thereby minimizing environmental impacts, reducing safety risks, improving quality, and expediting the project schedule. The new alignment was also designed to enable construction of most of the project offline to existing traffic, minimizing traffic disruption to an already congested roadway. This project won numerous awards including the Canadian Design-Build Institute – Award of Excellence (Major Structural Project), and Canadian Construction Association – Innovation Award.

Alternate Project Delivery

When engaged on a project, we bring to bear the collective experience of the entire EAC team. This approach helps to achieve benefits that may not otherwise be realized. EAC has consistently worked with project owners to effectively deal with unforeseen site conditions in an efficient and cost-effective manner.

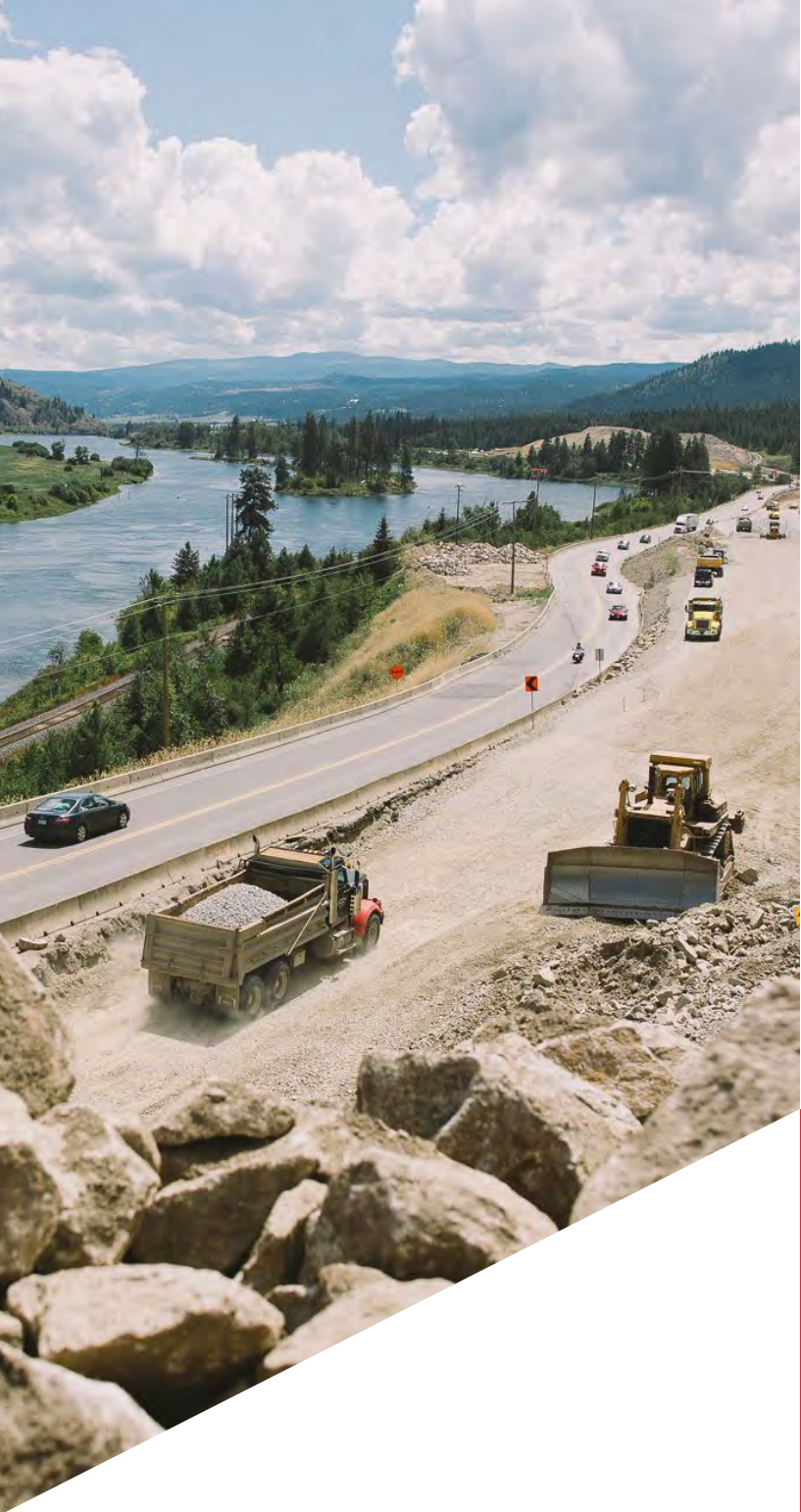
When engaged on a project, we bring to bear the collective experience of the entire EAC team. This approach helps to achieve benefits that may not otherwise be realized. EAC has consistently worked with project owners to effectively deal with unforeseen site conditions in an efficient and cost-effective manner.

Indigenous Relationships

Emil Anderson Construction is proud of the long-term relationships we've built with Indigenous groups throughout Western Canada. Our people-focused approach and commitment to early, respectful, and collaborative practices when partnering with First Nations groups has resulted in a long history of successful ventures and mutually beneficial business opportunities.

Our commitment to recruiting Indigenous candidates, providing training opportunities, and supporting career growth is an ongoing priority and has resulted in us welcoming many Indigenous individuals into the Emil Anderson team over the years. We look forward to continuing to work collaboratively with First Nations communities and businesses in the future.





OFFICE

Kelowna

907 Ethel Street
Kelowna, BC, Canada
V1Y 2W1



[EMILANDERSON.CA/CONSTRUCTION](https://emilanderson.ca/construction)



250 762 9999

CONSTRUCTION@EMILANDERSON.CA